

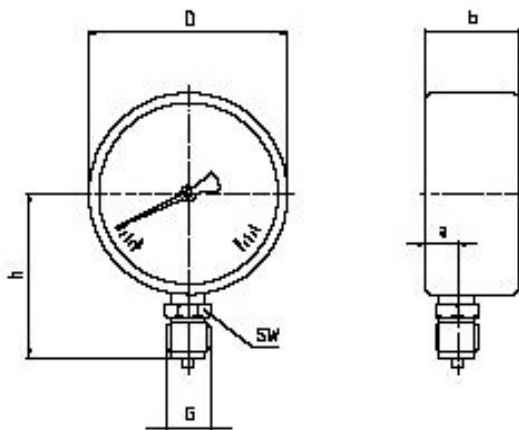
# HUNTER DIN / EN STANDARD INDUSTRIAL PRESSURE GAUGES

■ made  
■ in  
■ Germany

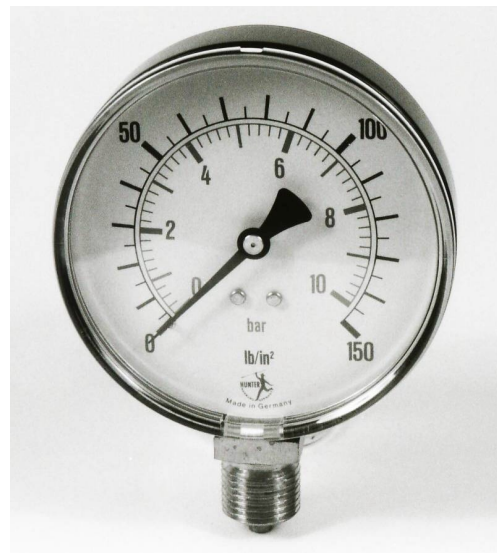
DIN EN Standard 837-1 / 2  
supersedes DIN 16063 / 64

#GP 100.24	Casing steel sheet, black, dia. 100 mm / 4"
#GP 100.24 SS	Casing stainless steel, dia. 100 mm / 4"
#GP 100.14	Casing ABS, black, dia. 100 mm / 4"

Purpose	measurement of positive and negative pressures				
Application	for all liquids and gases except for those having high viscosity or which tend to crystalize				
Window	acrylic glass - snap-in-window				
Dial	aluminium, white (black resp. black/red lettering)				
Thread connections	radial / bottom brass G 1/2" BSP - others on request (stainless steel on request)				
Measuring system	Cu-alloy: upto 40 bar Bourdon tube, from 60 bar coiled (stainless steel on request)				
Mechanism	copper alloy				
Ranges	-1.... 600 bar (or equivalent)				
	lb/in <sup>2</sup>	lb/in <sup>2</sup> + bar	feet of water	or others	Class 1.6
	kg/cm <sup>2</sup>	inHg	kPA	on request	



Model	dia. D	b	h	a	SW
GP100.XX	100 mm	30	58	11	22



Operating range	max. operating pressure 75% of full scale value for steady pressures or 60% for fluctuating. Occasional short time peaks to full scale permissible.
Temperature range	ambient temperature -25/ +60°C resp. process temperature +60°C (calibration reference temperature +20°C approx.)
Technical remarks	every 10°C deviation from the calibration reference temperature will produce an error of 0.3% of indicated pressure - error will be plus for higher temperatures and minus for lower (temperature used for the correction of the indicated pressure is the temperature of the gauge system and not the medium)

All details and data are subject to final confirmation

**HERMANN JAEGER GMBH**  
 P. O. Box 500 752 - 22707 Hamburg  
 Phone: [+49 40] 30 69 27 14 Fax: [+49 40] 38 75 23  
 mailto: info@hunter-hamburg.de www.hunter-hamburg.de



08-2003 HUNTER